

Progetto pubblicato da [Park Associati](#) il 19 Marzo 2009. Copertina © [Park Associati](#)

[Park Associati](#)

Milano (MI), Italia | [Slideshow](#)

B_O_B 01

Pirelli RE BIO office building

[Descrizione](#)[Immagini](#)[Persone](#)[Località](#)

The B_O_B Bio Office Building is a competition project which attempts to propose bio-climatic and energy solutions in work spaces which rebalance the relationship between the natural dimensions and the dynamics of efficiency and productivity. B_O_B enhances the quality of work environments and creates new synergies between the interior and exterior of the building. The project aims to be a role model for understanding the skin of a building and the interior as an interface between the urban setting and the functions of office life. The structure consists of a basic parallelepiped which resembles a crystal shard. The southern façade is characterized by a large bamboo lattice, while large aluminium panels arranged in a chequered formation cover the northern frontage. The plan allows for maximum functionality and the option for either an open space layout or units divided by partitions or furnished walls. B_O_B is a "living" organism. It follows the change of seasons, altering its skin like a chameleon in a constant dialogue with the life of the building. The façade establishes geometries and textures that are perfectly integrated with the surrounding cityscape, thus minimizing the environmental impact of the building.

Progettazione

- Park Associati, **Progettista**

Collaborazioni

- Danilo Annoscia, Andrea Brivio, Fabio Calciati, Davide Conti, Alice Cuteri, Fabio Galli, Paola Monti, Marco Neri, Marco Panzeri, Lia Petrides, Elisa Taddei, **Gruppo di progettazione**
- ONEOFF, Milano, **Modello**

Consulenze

- BV Associati: Nicola Bianchi, Andrea Viganò, Cinzia Barbaglia, **Programmazione e costi**

europaconcorsi®

[Cos'è europaconcorsi?](#) | [Registrati](#) | [Accedi](#)

Progetti

Progettisti

Fotografi

Albums

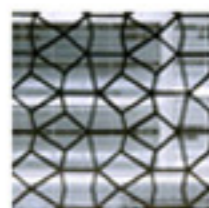
Bandi

Risultati

Jobs

**Prototipi e
Modelli Architettonici**
*Prototypes and
Architectural Models*

Taglio Laser

(2007) **Uffici, Edificio per Uffici**

Park Associati

Milano (MI), Italia

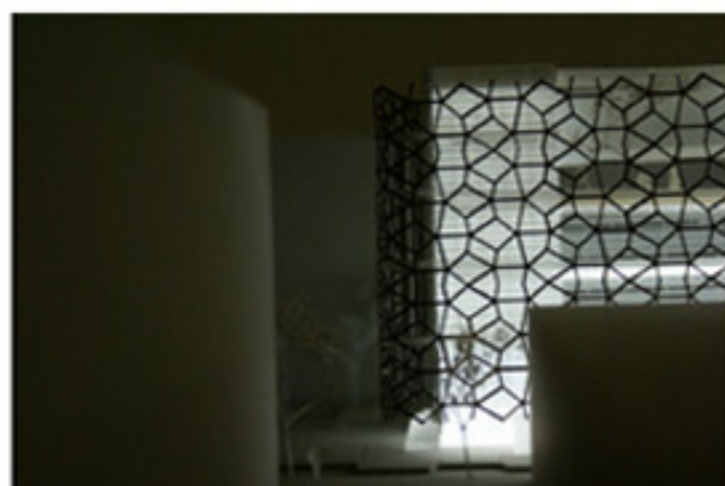
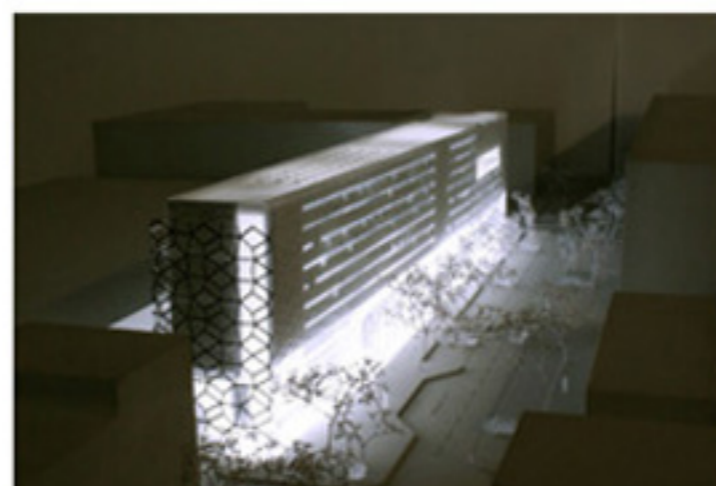
B_O_B 01

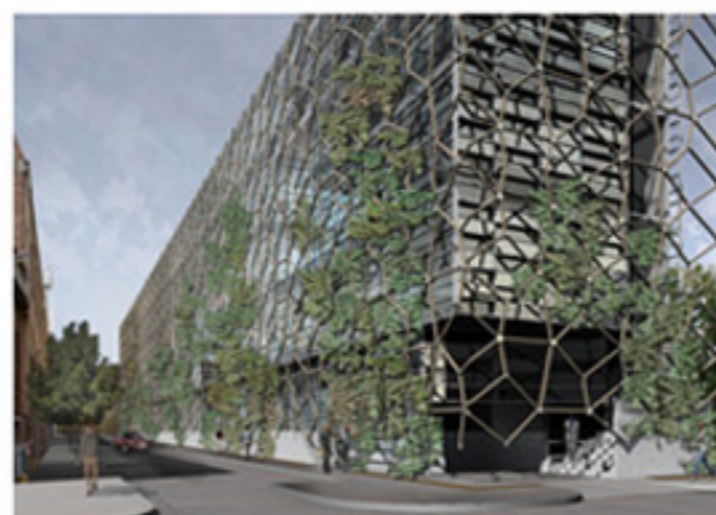
Descrizione

Immagini

Persone

Località

[Tutte](#) | [Fotografie](#) | [Render](#) | [Planimetrie](#) | [Dettagli](#)

 © [Park Associati](#). Tutti i diritti riservati
 Aggiunta il 19 Marzo 2009

 © [Park Associati](#). Tutti i diritti riservati
 Aggiunta il 19 Marzo 2009

 © [Park Associati](#). Tutti i diritti riservati
 Aggiunta il 19 Marzo 2009

 © [Park Associati](#). Tutti i diritti riservati
 Aggiunta il 19 Marzo 2009